



Ray Petersen, founder - Circa 1950



Kulik Lodge - Circa 1956



Ray "Sonny" Petersen - Circa 1962

2018 PACKAGES



**KULIK LODGE
BROOKS LODGE
GROSVENOR LODGE
KATMAI/BRISTOL BAY FLOAT TRIPS**



CONTENTS

Kulik Lodge Packages	page 2
Kulik Lodge Specials	page 4
Grosvenor Lodge Packages	page 6
Katmai/Bristol Bay Float Trips	pages 8
Frequently Asked Questions	page 9
Brooks Lodge Packages	pages 11,13
Booking a Reservation & General Terms and Conditions	page 15

Kulik Lodge

Kulik Lodge is Alaska's premier fly out sportfishing lodge and is located in a spectacular wilderness setting. Superb fishing is available adjacent to the lodge on the Kulik River and on the Kulik and Nonvianuk Lakes. The Kulik River is the epitome of a rainbow trout stream. Its gin clear water, gravel bottom and plentiful food supply provide an ideal habitat for the large population of native rainbow trout. Including fly outs in your stay will provide the means to fish other hot spots within a 100-mile radius of the lodge and allow you to take advantage of the variety of species of fish available in southwest Alaska: rainbow trout, arctic char, grayling, lake trout, pike, and five species of Pacific Salmon. Kulik has riverboats cached at various productive rivers and streams; you may take a one day float trip or hike in from your landing area to a hidden stream. The opportunity to view the breathtaking scenery of southwest Alaska is always a bonus. The Aleutian Range includes numerous active volcanoes, glaciers and the multicolored tundra.

Kulik's comfortable guest cabins accommodate two people and are equipped with electricity, shower and toilet facilities. The native spruce lodge boasts a large stone fireplace, dining area and bar where complimentary cocktails are served each evening. In the relaxed camaraderie of Kulik, away from the hustle and bustle of everyday life, new friendships are formed and old friendships reaffirmed.

KULIK LODGE SPORTFISHING

Included is round trip air transportation between Anchorage and Kulik, lodging, meals, boat and guide service while at Kulik, fishing license, rods and waders if required and complimentary cocktails.

June 15th to July 30th

(Transfer days are Saturdays and Tuesdays)

3 days, 3 nights, per person (Sat - Tues)	\$3,495.00
4 days, 4 nights, per person (Tues - Sat)	\$4,465.00
7 days, 7 nights, per person (Sat - Sat or Tues - Tues)	\$6,265.00

July 31st to September 29th

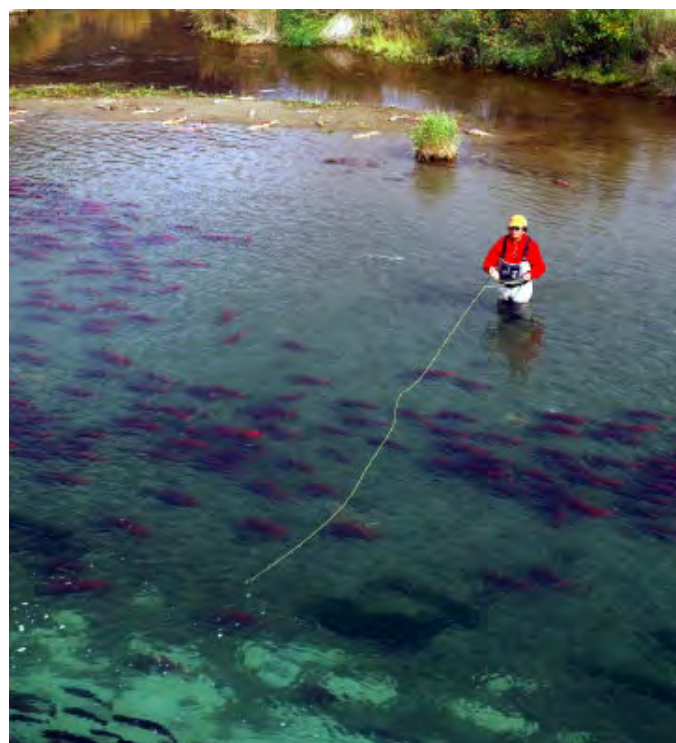
(Transfer days are Saturdays and Tuesdays)

3 days, 3 nights, per person (Sat - Tues)	\$3,895.00
4 days, 4 nights, per person (Tues - Sat)	\$5,455.00
7 days, 7 nights, per person (Sat - Sat or Tues - Tues)	\$6,595.00

Guided Fly out Sport fishing, per day, per person (two person min.)

Booked prior to final payment	\$425.00
Purchased after final payment	\$475.00

Guided sightseeing fly outs to Brooks Lodge are free July 1st through July 30th (not including arrival and departure days)





KULIK FISHING CHART

	June			July			Aug			Sept		
	8	16	25	8	16	25	8	16	25	8	16	25
Rainbow Trout	P	P	P	P	P	P	P	P	P	P	P	P
*Arctic Grayling	P	P	P	P	A	A	A	A	A	A	A	A
*Char	P	P	P	P	P	P	P	P	P	P	P	P
Lake Trout	P	P	P	P	A	A	A	A	A	A	P	P
*Northern Pike	A	A	A	A	A	A	A					

Salmon

*King	A	P	P	P	A							
*Sockeye		A	P	P	P	A						
*Silver							A	P	P	P	A	
*Chum					A	P	P	P	A			
*Pink							A	P	P	A		

P = Peak A = Available * = Fly out Required

IMPORTANT NOTE: This chart is based on previous experience and should be considered as only a rough guideline. Actual fishing during any given week may vary due to water conditions, fish runs, weather or other natural factors.



Grosvenor Lodge

Expect seclusion and comfortable accommodations at Grosvenor, not to mention the great fishing for rainbows, char, lake trout, pike and sockeye salmon (in season). The narrows area adjacent to the lodge provides excellent fishing and Grosvenor has access by jet boat to some of the area's finest fishing streams. Two of the rivers accessible from Grosvenor are the largest spawning streams for sockeye salmon in the Naknek drainage, getting over 100,000 fish each annually.

Grosvenor truly provides the "it feels like my own fishing lodge" experience and is ideal for families, business associates or a group of fishing buddies. Guests are accommodated in the three guest cabins which have heat and electricity. Two private restrooms are situated next to the cabins. The kitchen and dining area feature a great view of Grosvenor Lake. Many a tale has been told in the main lodge which houses the lounging area and bar, where complimentary cocktails are served each evening. The personable staff, comfortable accommodations, and excellent fishing assure you a memorable fishing experience. Four (4) guests is considered a full camp, however if a group would like to book the entire lodge, up to six (6) guests can be comfortably accommodated.

GROSVENOR LODGE SPORTFISHING

June 8th to September 20th

Included is round trip air transportation between Anchorage and Grosvenor, lodging, all fees, meals, boat and guide service, fishing license, rods and waders if required and complimentary cocktails. For parties of 4 to 6 guests. The transfer days are Mondays and Fridays.

3 days, 3 nights, per person (Fri - Mon)	\$3,775.00
4 days, 4 nights, per person (Mon - Fri)	\$4,200.00
7 days, 7 nights, per person (Fri - Fri or Mon - Mon)	\$5,870.00

Add \$6 per person, per night bed tax

Guided Fly out Sportfishing, per day, per person (two person min.)

Booked prior to final payment	\$450.00
Purchased after final payment	\$495.00

GROSVENOR FISHING CHART

	June	July	Aug	Sept	Oct
	1	15	1	15	1
Rainbow Trout	P	P	P	P	P
Char	P	P	P	P	P
Lake Trout	P	P	P	P	P
Northern Pike	P	P	A	A	A
Sockeye Salmon			P	P	

P = Peak A = Available

IMPORTANT NOTE: This chart is based on previous experience and should be considered as only a rough guideline. Actual fishing during any given week may vary due to water conditions, fish runs, weather or other natural factors.



Grosvenor Lodge



KATMAI/BRISTOL BAY

FLOAT TRIPS

"**Angler's Paradise**" offers unguided float/fishing trips down the world famous Alagnak (Branch) River. The river is noted for a variety of sport-fish - Rainbow Trout, Arctic Char, Arctic Grayling, and the five species of Pacific Salmon. The float trip begins at Nonvianuk Camp at the end of Nonvianuk Lake. Many a wildlife viewing opportunity will present itself, and the breathtaking scenery is an added bonus. Available June 10th through September 22nd.

Unguided Float Trips

Sunday to Sunday, 8 days / 7 nights
Minimum 2 persons, maximum 6 persons

Price per person: \$1,735 + \$300 raft deposit

The deposit will be refunded if rafts and equipment are returned in good condition.

You will depart from our office on the eight-passenger Navajo Chieftain for the flight to Kulik Lodge, where you will transfer to boat or floatplane for the short trip to Nonvianuk Camp. The float trip itinerary is yours to plan as you float - fishing, hiking, and camping at any spot which you so desire. A Katmai Air pilot will meet you at a predetermined time and location.

INCLUDED IN THE PRICE:

- Roundtrip air transportation from Anchorage to Nonvianuk Camp, and pickup from the end of the float trip
- Seventy pounds of gear as baggage, each way
- Rafts, lifevests, rowing frame, oars, raft repair kit, and an electric bear fence for a maximum of seven days

NOT INCLUDED IN THE PRICE:

- Food, camping equipment, and fishing equipment
- Fishing licenses (may be purchased at Kulik Lodge)

	June			July			Aug			Sept		
	8	16	25	8	16	25	8	16	25	8	16	25
Rainbow Trout	P	P	P	A	A	A	A	P	P	P	P	P
Arctic Grayling	P	P	P	A	A	A	P	P	P	P	P	P
Arctic Char	A	A	A	A	A	A	A	A	A	P	P	P
Lake Trout	P	P	P	P	A	A	A	A	A	A	A	A
Northern Pike	A	A	A	A	A	A	A	A	A	A	A	A
King Salmon			A	P	P	P	A					
Sockeye Salmon			A	P	P	P	A					
Silver Salmon							A	P	P	P	A	
Chum Salmon					A	P	P	P	A			
Pink Salmon					A	P	P	A				

P = Peak A = Available

IMPORTANT NOTE: This chart is based on previous experience and should be considered as only a rough guideline. Actual fishing during any given week may vary due to water conditions, fish runs, weather or other natural factors.

FREQUENTLY ASKED QUESTIONS

How many guests are there to each guide? The number of guests to each guide is 2 to 4 depending on the lodge and the fishing destination.

Can we take home the fish we catch? Due to the short growing season and cold water temperatures in Alaska, native fish grow and mature slowly. Guests are asked to release all their catch of fresh water fish. A limited amount of salmon may be taken home.

How are fish packaged to take home? The salmon you keep are filleted, vacuum packed, frozen and packed in fish boxes for you at the lodge (National Park Service regulations prohibit this at Brooks Lodge though). If you have a long distance to travel home, insulated fish boxes and freezer packs are available to purchase at a number of locations in Anchorage.

Are you a strictly a fly fishing only lodge? No. We can accommodate fly or spin fisherman, although some of the streams that we go to are fly fishing only streams. At some of these locations you can still use a spinning rod with a fly on the end. All of our guides are fly fishing instructors, so if you would like to learn to fly fish, we would be happy to teach you during your stay.

What is a fly out and where do you fly out to? A fly out means that you take an airplane to a different river to fish for the day. We fly to many different areas depending on what type of fish you want to catch and where the best spot for that species is at the time you are there.

When is the best time to come? Anytime is a good time at Anglers Paradise Lodges. Each time of the year provides a unique fishing experience with different species available.

What is the weather like? The weather in Katmai can be very unpredictable. It can change greatly even in the same day. Temperatures can range between 45 and 70 degrees and even a bit lower in September. Wind and rain are common so you should dress in layers that can be added to or taken away throughout the day as the weather dictates.

Are there a lot of bugs? There can be depending on how dry or wet it has been. Some people choose to bring head nets. Most just bring a good insect repellent. You want something with a high DEET concentration for it to be effective and spray it on your clothing and hat, not your skin.

How long does it take to get to the lodge from Anchorage? The flight from Anchorage to Kulik Lodge takes approximately 1 hour and 30 minutes. If you are traveling on to Grosvenor Lodge or Brooks Lodge, it is another 15 – 25 minutes via float plane to those destinations.

Are cocktails included in the packages? Complimentary cocktails are served at Kulik Lodge and Grosvenor Lodge and are included during your stay. Beverages at Brooks Lodge can be purchased in the main lodge during lunch and dinner times. Our beverages typically include Alaskan Amber beer on tap, a selection of wines and premium quality liquors. If you prefer high end wines, there will be a selection available for purchase.

What type of fishing gear is used at the lodges? Rods and waders are included in your rate at Kulik Lodge and Grosvenor Lodge and are available for rent at Brooks Lodge. Simms or Redington waders and Sage rods and Ross reels are provided to the guests during their stay.



Brooks Lodge

Brooks Lodge overlooks the world famous Brooks River in the heart of Katmai National Park. Superb fishing is available adjacent to the lodge on the Brooks River and on the Brooks and Naknek Lakes. The Brooks River is fly fishing only. The Brooks Lodge fishing packages are for independent minded fly fishermen who want to experience the great sportfishing of the Katmai area without the expense of a fully guided sportfishing lodge. Including fly outs in your stay will provide the means to fish other hot spots and allow you to take advantage of the variety of species of fish available in southwest Alaska. It is recommended that angler's are self-sufficient and have experience in tying knots, wading safely, spotting, landing and handling fish as well as catch and release techniques.

Guest accommodations consist of sixteen modern rooms all with showers, private toilet facilities, heat and electricity. Rooms accommodate two to four persons. The beautiful main lodge building boasts a spectacular view of aquamarine Naknek Lake. Its large circular fireplace is popular for evening relaxing and reminiscing about the day's adventures. Hearty Alaskan fare is served three times a day buffet style in the dining area of the lodge. Cocktails are available for purchase at the lodge bar each afternoon and evening. Comfortable accommodations in the heart of the magnificent Katmai wilderness make this a truly perfect vacation spot.

BROOKS LODGE SPORTFISHING

Included is round trip air transportation between Anchorage and Brooks Lodge, all fees, lodging, meals and a 1/2 day guided Brooks River fishing orientation.

All Prices are Per Person	June 7-20 Aug 10-25	All other Dates
3-NIGHT PACKAGE		
Double Occupancy	\$1985.00	\$2385.00
Multiple 3 (3 per room)	\$1760.00	\$2035.00
Multiple 4 (4 per room)	\$1640.00	\$1855.00
ADDITIONAL NIGHTS		
Double Occupancy	\$ 475.00	\$ 475.00
Multiple 3 (3 per room)	\$ 357.00	\$ 357.00
Multiple 4 (4 per room)	\$ 299.00	\$ 299.00

If any one night is in the month of July, there is a three night maximum stay allowed.

Guided Fly out Sportfishing, per day, per person (two person min.)

Booked prior to final payment	\$450.00
Purchased after final payment	\$495.00



Brooks Lodge Fishing Options

BOAT AND SPORTFISHING GUIDE SERVICE

Full Day - \$275 per person - min. 2 persons, max. 4 persons

Half Day - \$185 per person - min. 2 persons, max. 4 persons

BROOKS RIVER GUIDE SERVICE

Hourly (per person) Single \$ 80.00 / 2 or more \$ 55.00

Half Day (per person) Single \$185.00 / 2 or more \$145.00

Full Day (per person) Single \$275.00 / 2 or more \$210.00

FISHING EQUIPMENT RENTALS

Fly or Spin Rod and Reel \$10.00 per person, per day

Fishing Waders \$ 9.00 per person, per day

Alaska Fishing License available at the "Trading Post"

BROOKS FISHING CHART

	June			July			Aug			Sept		
	8	18	25	8	18	25	8	18	25	8	18	25
Rainbow Trout	P	P	P	P	P	P	P	P	P	P	P	P
Char	P	P	P	A	A	A	P	P	P	P	P	P
Arctic Grayling	P	P	P	P	P	P	P	P	P	A	A	
Lake Trout	P	P	P	P	A	A	A	A	A	A	A	
Northern Pike	P	P	P	A	A	A	A	A	A	A	A	
Sockeye Salmon		P	P	P	P	P	A					
Silver Salmon							A	P	P	P	A	
*King Salmon		A	P	P	A							

P = Peak A = Available * = Fly out Required

IMPORTANT NOTE: This chart is based on previous experience and should be considered as only a rough guideline. Actual fishing during any given week may vary due to water conditions, fish runs, weather or other natural factors.

CATCH AND RELEASE

These native fish grow and mature slowly due to the short growing season and cold water temperatures of Alaska. It has not yet been necessary to stock any of the lakes or streams. Therefore, guests are asked to release all of their catch of both fresh water and salmon species.

Visit our website at
katmailand.com

"Katmai is the Alaska that people dream of, and only Katmailand and Anglers Paradise Lodges can show it to you the way that you expect."



Sonny, Ray and Sean Petersen - Circa 1998

Two hundred and fifty miles southwest of Anchorage lies the "Bristol Bay Wild Trout Area". This area is Alaska's famous rainbow trout country. Rainbows, as well as char and arctic grayling are available throughout the season, and lake trout and northern pike are available in June and July. Each year five species of pacific salmon burst from the Bering Sea by the tens of millions to spawn in the lakes and rivers. The phenomenal angling is a result of the salmon run's enrichment of the lakes and streams of the "Wild Trout Area".

Founding the first sport fishing lodges in southwest Alaska's Bristol Bay Area gave aviation pioneers Ray Petersen and John Walatka the "pick of the hot spots". They named the lodges "Angler's Paradise". Operated today by Ray Petersen's son Sonny Petersen, the three "Angler's Paradise Lodges" are the standard of excellence, located in majestic wilderness settings with superb fishing right in their back yards. And, being centrally located in the best trout and salmon fishing area of Alaska, gives "Angler's Paradise" guests the best and easiest access to hundreds of miles of lakes and streams.

The three lodges of "Anglers Paradise" offer uniquely different experiences, but no matter which lodge or combination of lodges you choose to visit, the fishing can't be beat. Friendly professional guides are the key to your satisfaction. The knowledge of the fishing waters and terrain accumulated by our staff since 1950, assures you a truly exceptional fishing experience.

At "Angler's Paradise", you will relax and renew yourself with superb fishing and breathtaking scenery. The comfortable accommodations and company of other sport fishing people make this a truly perfect vacation spot.

BOOKING A RESERVATION

Reservations may be made through Katmailand, Inc. or by calling any travel agent. For further information write:

Katmailand, Inc. at 4125 Aircraft Drive, Anchorage, AK 99502. Phone toll-free 800-544-0551, or in Alaska 907-243-5448. FAX-907-243-0649. E-mail: fish@katmailand.com.

A 50% deposit of the total reservation is due in order to confirm a reservation. Bookings will be cancelled if the deposit is not received by Katmailand within 3 days of the date of booking. The balance payment is due 90 days prior to the beginning date of the reservation. Upon receipt of payment in full, Katmailand will remit all travel documents.

Cancellations will be refunded only if all available space is sold, minus a 5% service charge based on the total price of the package (service charge only applies to Brooks Lodge packages). Changes in reservation dates are considered cancellations and are subject to our cancellation policy. Deposits are not transferable to another reservation or reservation date. Where changes are made in the itinerary at the request of the guest, no refunds will be made. You may want to consider trip cancellation insurance.

RESPONSIBILITY

The Kulik Lodge is operated by Katmai Air LLC. Katmailand Inc. is solely the reservation agent for the Kulik Lodge packages or tours. Katmailand Inc. neither controls, nor operates nor is it responsible for the actions of Kulik Lodge or Katmai Air LLC.

The Grosvenor Lodge and the Brooks Lodge are operated by Katmailand, Inc. Katmailand neither controls, nor operates nor is it responsible for the actions of independent contractors such as airlines or transporters used in these packages or tours. Katmailand's responsibility does not extend beyond the Grosvenor Lodge or Brooks Lodge or equipment operated by Grosvenor Lodge or Brooks Lodge.

GENERAL TERMS AND CONDITIONS

The right is reserved by Katmailand, Inc. and/or Katmai Air LLC to cancel or alter any itinerary as current conditions require. The company or travel agency booking these tours will not be held responsible for any expense due to delays or cancellation of transportation or lodge rates effective after publication of this rate information sheet. All prices are effective January 1 through October 31, 2018 and are subject to change without notice.

Originating and connecting carriers are not to be held responsible for any act, omission, or event during the time passengers are not ABOARD their aircraft. The passenger contract in use by any carrier, when issued, shall constitute the contract between the carrier and the purchaser of these tours, or passengers.

Weather can occasionally affect the scheduled flights or tours. If due to weather or any reason beyond the control of Katmailand Inc. or Katmai Air LLC you are unable to complete your itinerary, no refund will be made. Should you have to spend an additional night, you will be responsible for your own hotel and meal costs. Neither Katmai Air LLC, Katmailand Inc. or the travel agent will assume any additional expense.



**4125 Aircraft Drive
Anchorage, Alaska 99502
Phone: (907) 243-5448
Toll-Free: 800-544-0551
FAX: (907) 243-0649
www.katmailand.com
fish@katmailand.com**

Concessions in Katmai National Park, at Brooks Lodge and Grosvenor Lodge, are managed by Katmailand, Inc. and authorized by the National Park Service.